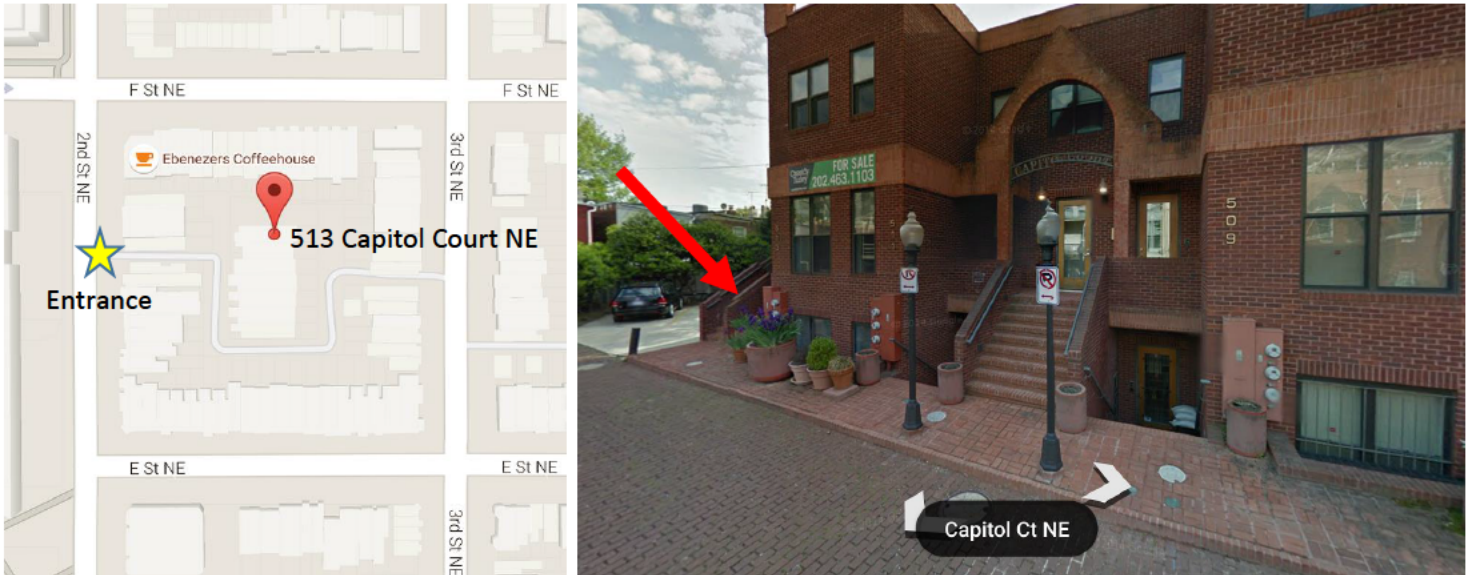


## DIRECTIONS AND PARKING INFORMATION FOR CLIENTS AND VISITORS

The DC office of Gowen Rhoades Winograd and Silva is located at 513 Capitol Court N.E., Washington, DC 20002. We are in Suite 100, the basement level. Capitol Court is a small interior courtyard bounded by 2nd Street NE on the West, 3rd Street NE on the East, E Street NE on the South and F Street NE on the North.



The main entrance to Capitol Court is on 2nd Street NE between E and F Street NE, directly across the street from the back of the Administrative Office of the U.S. Courts. When you enter Capitol Court NE you will see a row of townhouses in the middle of the courtyard; our office is the lower level of the townhouse on the far left of the row. You cannot park in the courtyard; please take a look at the section entitled “parking options” below for more information.

### Arriving by Metro and Walking

Our office is about a 5-minute walk from Union Station on the Red Line. Exit the station using the Massachusetts Ave. exit. Walk east along the front of Union Station until you reach the end of the covered entrance to the building. Cross the street and turn left on Columbus Circle NE, heading downhill toward the Security and Exchange Commission. Columbus Circle turns into F Street NE at the door to the SEC, turn right and follow F Street NE to 2nd Street NE. Turn right and walk until you see the sign for Capitol Court NE. Turn left and enter Capitol Court NE.

### Driving Directions

Virginia and Points South: Take 395 North into Washington. Take the D Street NW exit ramp (Exit 9). At the top of the ramp as it emerges from the tunnel is D Street NW. Turn right (heading East) on D Street NW. Follow D Street to 2nd Street NE. Turn left on 2nd Street NE.

Points East: Head West on H Street NE. Turn left on 4th Street NE. Turn Right on F Street NE. Turn left on 2nd Street NE. Alternatively, take Rhode Island Ave. or New York Ave. to North Capitol Street. Head South on North Capitol Street, turn left on H Street NW. Turn right on 3rd Street NE. Turn right on F Street NE. Turn left on 2nd Street NE.

Points North: Heading South on North Capitol Street, turn left on H Street NW. Turn right on 3rd Street NE. Turn right on F Street NE. Turn left on 2nd Street NE.

Points West: Take Constitution Ave to 2nd Street NE. Turn left on 2nd Street NE.

### Parking Options

Our office is located in a residential neighborhood. On most streets you may park for free for up to two hours during normal business hours; pay close attention to the parking signs. If you would like to park your car in a garage, Union Station offers parking paid by the hour with entrances off of Columbus Circle NE and H Street NE. There is also a paid parking garage located at 700 2nd Street NE, between G and H Streets NE.